

CEDAR RAPIDS MUSEUM OF ART  
JAMES SWANN *In Quest of a Printmaker*  
CEDAR RAPIDS MUSEUM OF ART

# JAMES SWANN

*In Quest of a Printmaker*



WITH PRESENTATION PRINTS OF  
THE CHICAGO SOCIETY OF ETCHERS, PRAIRIE PRINT MAKERS,  
AND THE WOODCUT SOCIETY

CEDAR RAPIDS MUSEUM OF ART

Joseph S. Czestochowski

**INTERNATIONAL ARTS, Memphis, TN.**

Tel 1917 843 9696 Fax 1212 208 2490 [interarts@parkers.com](mailto:interarts@parkers.com)

APPENDIX A

# Chicago Society of Etchers

PRESENTATION PRINTS, 1912-1955

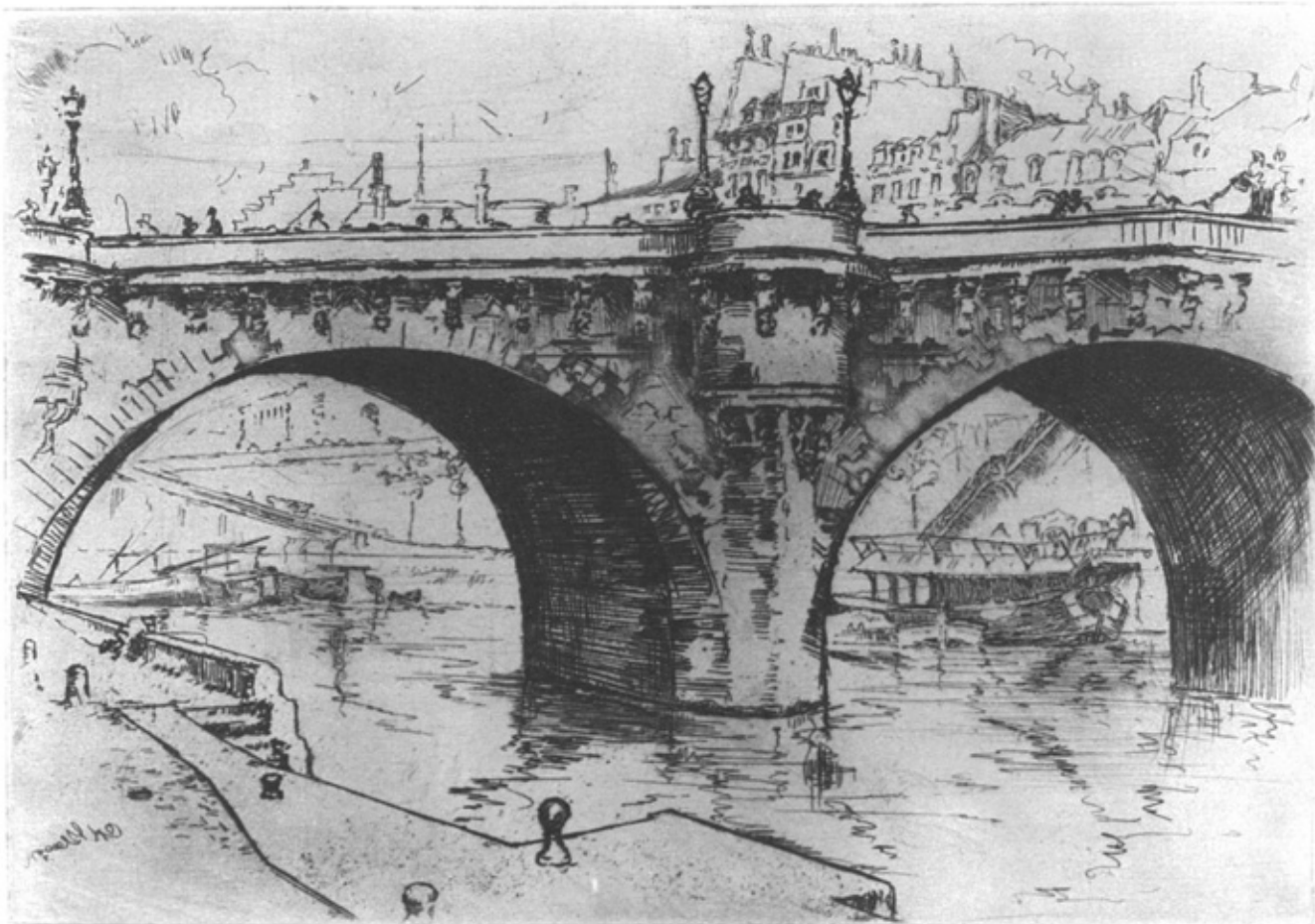
The Chicago Society of Etchers was organized in January 1910 with twenty charter members, including Bertha E. Jaques, Earl H. Reed, Otto J. Schneider, and Ralph Pearson. Its activities were diverse, including the organization of annual exhibitions, the issuance of publications or etchings, and the donation of members' work to various public institutions such as the National Museum in Washington, D.C. Although the documentation is not complete, it is believed that the society informally issued several prints to its associate members before 1912, when the publication prints were clearly designated. As best as can be determined, in 1910 the society issued these etchings: Earl H. Reed, *Old Willows*; Katherine Merrill, *St. Ethelburga's*; and Bertha E. Jaques, *Fruit Boats*. In 1911, these etchings were issued: Earl Reed, *House on Clay Bank*; Bertha E. Jaques, *Old St. Augustine*; and Charles W. Dahlgreen, *Heatherlands*. These works are not documented in this catalogue, since they were not formally designated presentation prints by the society.

From 1912 to 1955, with the possible exception of 1952, the Chicago Society of Etchers issued presentation prints to its associate members. The work of the society was conducted by the secretary-treasurer. Bertha E. Jaques served in that capacity from 1912 to 1936, followed by James Swann from 1937 to 1947 and F. Leslie Thompson from 1948 to 1955. For more information about the early history of the society see Bertha E. Jaques's manuscript, *The Graphic Arts in Illinois* (1918). Copies exist in the Ryerson Library of the Art Institute of Chicago and the Cedar Rapids Museum of Art, Iowa.





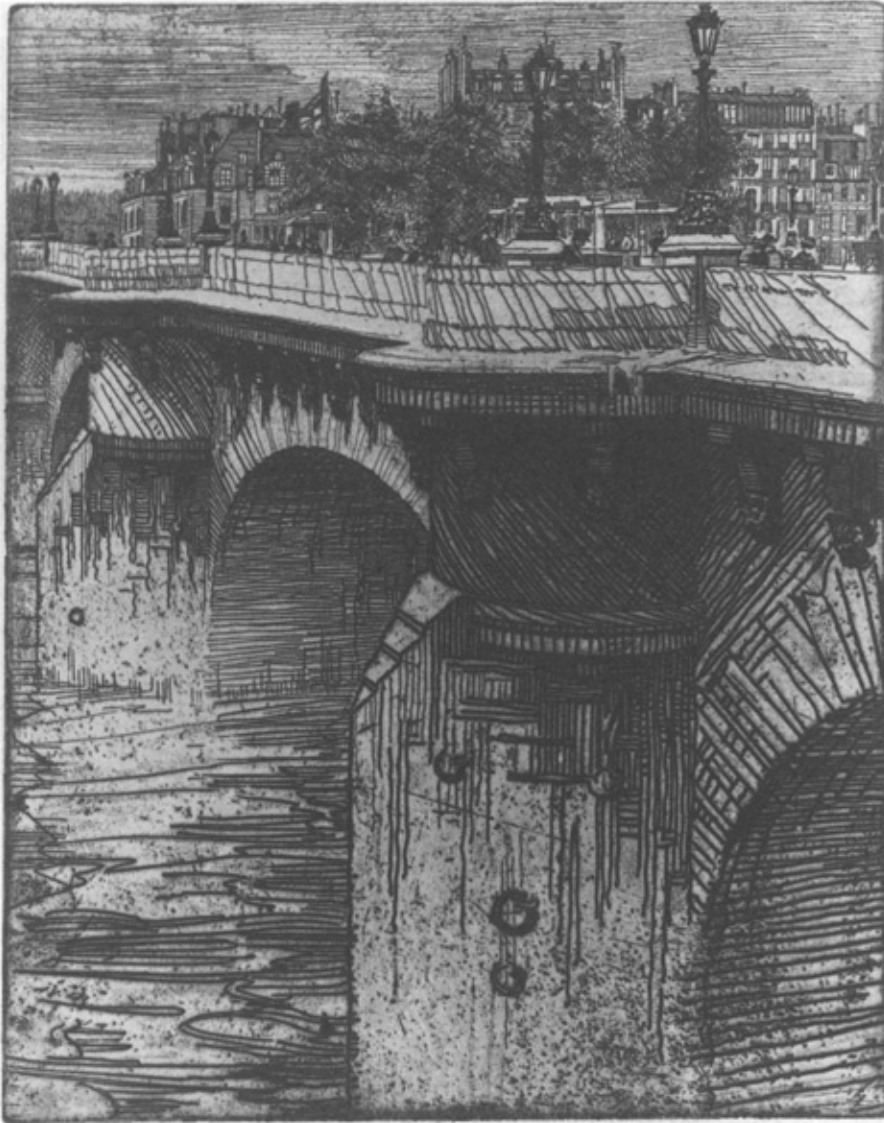
1.



2.

1.  
 Ernest D. Roth (1879–1964)  
 A RAINY DAY, 1908  
 Alternate title: *Archway in Florence*  
 Etching  
 Plate: 17.8 x 11.1 cm. (7 x 4<sup>3</sup>/<sub>8</sub> in.)  
 Edition: 325.  
 Printer: Frederick T. Reynolds (1882–1969)  
 Inscribed lower left: E. D. Roth 1908  
 Impressions: CW  
 References: Not listed in Whitmore  
 Notes: Plate issued as frontispiece for *The Etching of Cities*, by Thomas Wood Stevens. Printed by Ralph Fletcher Seymour Company, Chicago, 1913. 1912 Presentation/Gift Print, First Publication. Reproduction from an impression in a private collection.

2.  
 Charles K. Gleeson (1878–1948)  
 AN OLD PIECE OF MASONRY: PONT NEUF,  
 PARIS, 1913  
 Etching  
 Plate: 12.4 x 17.9 cm. (4<sup>7</sup>/<sub>8</sub> x 7<sup>1</sup>/<sub>16</sub> in.)  
 Edition: 325.  
 Printer: Frederick T. Reynolds (1882–1969)  
 and Charles K. Gleeson  
 Inscribed lower left: C. K. Gleeson  
 Impressions: IMA, NPL  
 Notes: Plate issued as frontispiece for *The Etching of Bridges*, by T. E. Tallmadge. Printed by Ralph Fletcher Seymour Company, Chicago, 1913. 1913 Presentation/Gift Print, Second Publication. Reproduction from an impression in the Newark Public Library, New Jersey.



3.

3.  
 Roi Partridge (1888–1984)  
 L'ÎLE DE LA CITÉ, PONT NEUF, PARIS, 1913  
 Etching  
 Plate: 25.1 x 19.7 cm. (9<sup>7</sup>/<sub>8</sub> x 7<sup>3</sup>/<sub>4</sub> in.)  
 Edition: 325.  
 Printer: Frederick T. Reynolds (1882–1969)  
 Inscribed lower right: *R P 13: R P Paris 1913*  
 Impressions: IMA, NMAA, NPL  
 References: White 49  
 Notes: Plate issued as frontispiece for *The Etching of Bridges*, by T. E. Tallmadge. Printed by Ralph Fletcher Seymour Company, Chicago, 1913. 1913 Presentation/Gift Print, Third Publication. Reproduction from an impression in the Newark Public Library, New Jersey.

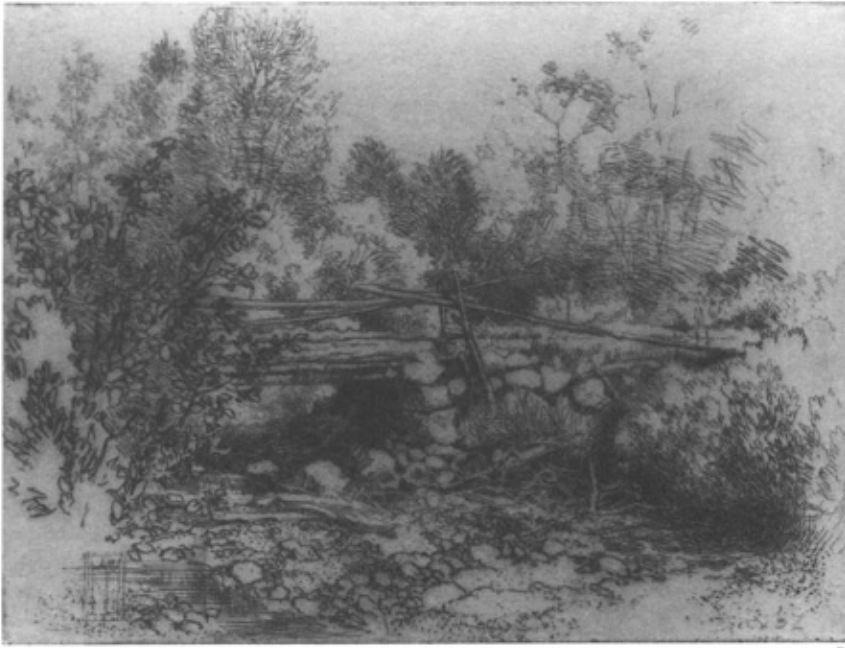
4.  
 Arthur Allen Lewis (1873–1957)  
 THE DEAD OAK, 1914  
 Drypoint  
 Plate: 24.8 x 12.4 cm. (9<sup>3</sup>/<sub>4</sub> x 4<sup>7</sup>/<sub>8</sub> in.)  
 Edition: 250.  
 Printer: Allen Lewis  
 Impressions: IMA, NPL, NYPL  
 Notes: Plate issued as frontispiece for *The Etching of Landscapes*, by Henry Winslow. Printed by Ralph Fletcher Seymour Company, Chicago, 1914. 1914 Presentation/Gift Print, Fourth Publication. Reproduction from an impression in the Newark Public Library, New Jersey.



4.

5.  
 Franklin T. Wood (1887–1945)  
 THE DRY BROOK, 1914  
 Drypoint  
 Plate: 14.9 x 20 cm. (5<sup>7</sup>/<sub>8</sub> x 7<sup>7</sup>/<sub>8</sub> in.)  
 Edition: 250.  
 Printer: Frederick T. Reynolds (1882–1969)  
 Inscribed lower left: *Franklin T. Wood*  
 Impressions: IMA, NPL, NYPL  
 Notes: Plate issued as frontispiece for *The Etching of Landscapes*, by Henry Winslow. Printed by Ralph Fletcher Seymour Company, Chicago, 1914. 1914 Presentation/Gift Print, Fifth Publication. Reproduction from an impression in the Newark Public Library, New Jersey.





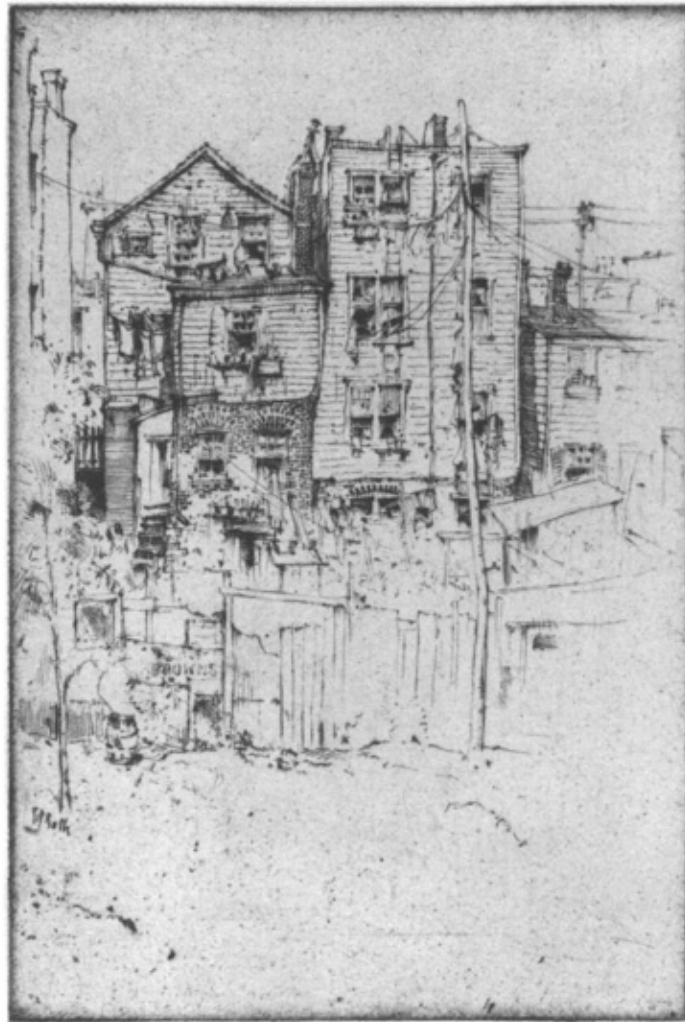
7.  
Ernest D. Roth (1879–1964)  
OUR NEIGHBOR'S YARD, CLIFFSIDE, NEW  
JERSEY, 1916  
Etching  
Plate: 22.5 x 15.2 cm. (8<sup>7</sup>/<sub>8</sub> x 6 in.)  
Edition: 270.  
Printer: Frederick T. Reynolds (1882–1969)  
Inscribed lower left: E. D. Roth  
Impressions: LC, NPL  
References: Not listed in Whitmore  
Notes: Plate issued as frontispiece for *The  
Etching of Contemporary Life*, by Frank  
Weitenkampf. Printed at The Mill, Marlbor-  
ough on the Hudson, New York, 1916. Paper,  
type, and printing by Dard Hunter  
(1883–1966). Special edition bound by the  
Oakwood Binders, Pittsfield, Massachusetts.  
1916 Presentation/Gift Print, Seventh Pub-  
lication. Reproduction from an impression in  
the Newark Public Library, New Jersey.

5.



6.

6.  
William Auerbach Levy (1889–1964)  
TORAH—THE NEW TALMUD, 1915  
Etching  
Plate: 19.7 x 14.9 cm. (7<sup>3</sup>/<sub>4</sub> x 5<sup>7</sup>/<sub>8</sub> in.)  
Edition: 250.  
Printer: Frederick T. Reynolds (1882–1969)  
Inscribed upper left: William Auerbach Levy  
1915  
Impressions: LC, NMAA, NYPL  
Notes: Plate issued as frontispiece for *The  
Etching of Figures* by William Aspinwall  
Bradley. Printed at The Mill, Marlborough on  
the Hudson, New York, 1915–1916. Paper,  
type, and printing by Dard Hunter  
(1883–1966). 1915 Presentation/Gift Print,  
Sixth Publication. Reproduction from an im-  
pression in the New York Public Library.



7.



8.

8.  
Jan C. Vondrous (1884–Unknown)  
THE OLD TOWN BRIDGE TOWER (PRAGUE), 1917  
Drypoint  
Plate: 24.8 x 19.8 cm. (9<sup>3</sup>/<sub>4</sub> x 7<sup>13</sup>/<sub>16</sub> in.)  
Edition: 200.  
Printer: Jan C. Vondrous  
Inscribed lower center: *Vondrous 1917*  
Impressions: CRMA, CW, NPL, NYPL  
Notes: 1917 Presentation/Gift Print, Eighth Publication. Reproduction from an impression in the Newark Public Library, New Jersey.



9.

9.  
John W. J. Winkler (1894–1979)  
KONG TONG & Co., 1916  
Etching  
Plate: 12.9 x 16.4 cm. (5<sup>1</sup>/<sub>16</sub> x 6<sup>7</sup>/<sub>16</sub> in.)  
Edition: 200.  
Printer: Frederick T. Reynolds (1882–1969)  
Impressions: NPL, NYPL  
Notes: 1918 Presentation/Gift Print, Ninth Publication. Reproduction from an impression in the Newark Public Library, New Jersey.

10.  
Frank W. Benson (1862–1951)  
FLYING DUCKS, 1919  
Etching  
Plate: 22.5 x 17.5 cm. (8<sup>7</sup>/<sub>8</sub> x 6<sup>7</sup>/<sub>8</sub> in.)  
Edition: 235.  
Printer: Frederick T. Reynolds (1882–1969)  
Inscribed lower right: *F.W.B. 19*  
Impressions: BPL, CW, LC, NPL  
References: Paff 160  
Notes: 1919 Presentation/Gift Print, Tenth Publication. Reproduction from an impression in the Newark Public Library, New Jersey.

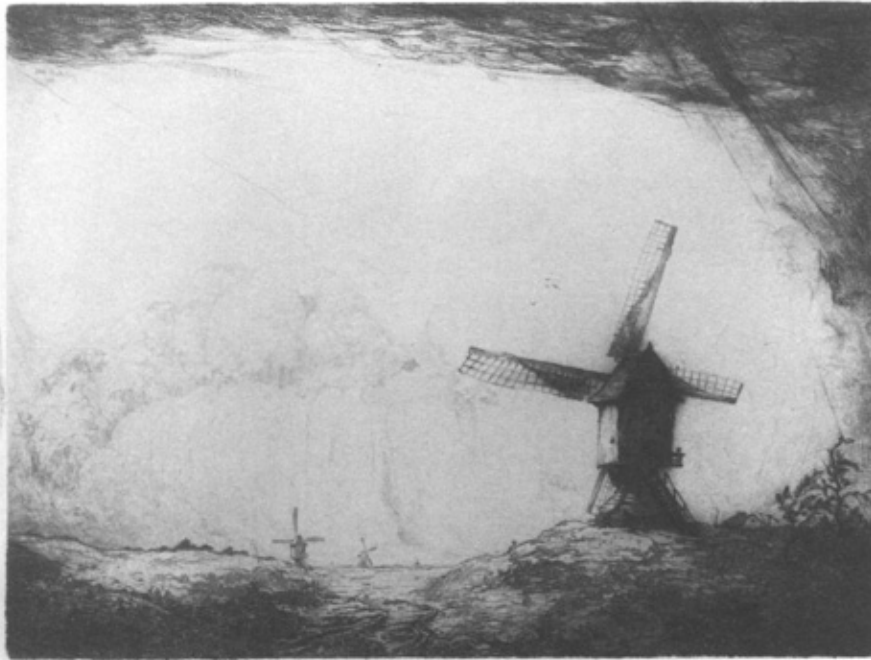


11.

11.  
Lester G. Hornby (1882–1956)  
PALAIS DU JUSTICE IN THE RAIN, 1920  
Etching  
Plate: 19.7 x 15.2 cm. (7<sup>7</sup>/<sub>8</sub> x 6 in.)  
Edition: 250.  
Printer: Frederick T. Reynolds (1882–1969)  
Inscribed lower left: *L.G.H. Paris*  
Impressions: BPL, CW, NPL  
Notes: 1920 Presentation/Gift Print, Eleventh Publication. Reproduction from an impression in the Newark Public Library, New Jersey.







12.  
Dirk Baksteen (1886–Unknown)  
LES TROIS MOULINS, 1921  
Etching  
Plate: 20.6 x 27.3 cm. (8 1/8 x 10 3/4 in.)  
Edition: 250.  
Printer: Dirk Baksteen  
Inscribed upper left: *Dirk Baksteen 1921*  
Impressions: NPL, NYPL  
Notes: 1921 Presentation/Gift Print, Twelfth  
Publication. Reproduction from an impression  
in the Newark Public Library, New  
Jersey.

12.



13.



14.

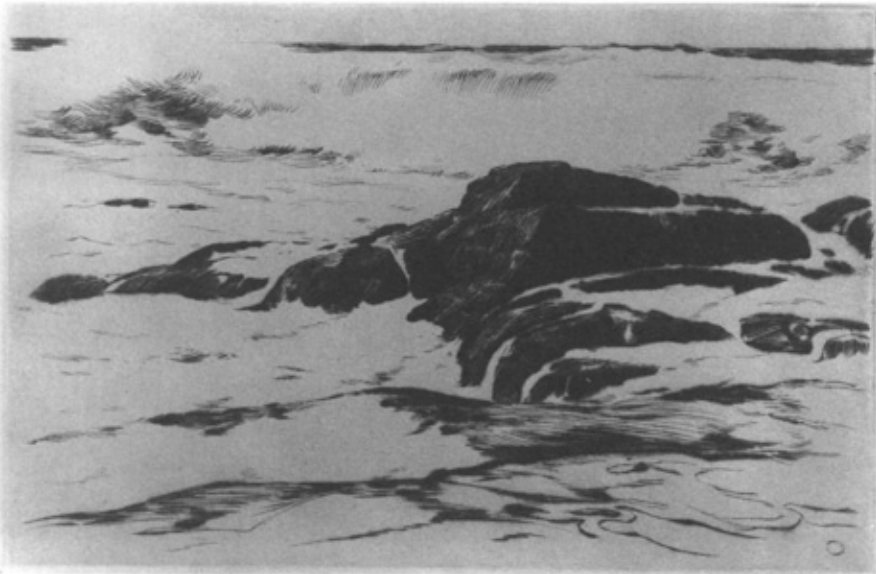


15.

13.  
Troy Kinney (1871–1938)  
DAWN, 1923  
Etching  
Plate: 22.5 x 14.3 cm. (8<sup>7</sup>/<sub>8</sub> x 5<sup>5</sup>/<sub>8</sub> in.)  
Edition: 350.  
Printer: Frederick T. Reynolds (1882–1969)  
Impressions: AIC, CRMA, CW, NPL  
References: Kinney 37  
Notes: 1922 Presentation/Gift Print, Thirteenth Publication. Reproduction from an impression in the Newark Public Library, New Jersey.

14.  
Arthur William Heintzelman (1890–1965)  
A DONKEY CART IN MONTMARTRE, 1923  
Etching  
Plate: 24.1 x 19.1 cm. (9<sup>1</sup>/<sub>2</sub> x 7<sup>1</sup>/<sub>2</sub> in.)  
Edition: 300.  
Printer: Eugene Delâtre (1864–1938)  
Inscribed lower left: *A. W. Heintzelman*  
Impressions: BM, BPL, CW, NPL, NYPL  
References: Heintzelman 66  
Notes: 1923 Presentation/Gift Print, Fourteenth Publication. Reproduction from an impression in the Newark Public Library, New Jersey.

15.  
Martin Hardie (1875–1952)  
SUNSET AT HEYBRIDGE BASIN, 1924  
Etching  
Plate: 20 x 24.9 cm. (7<sup>7</sup>/<sub>8</sub> x 9<sup>1</sup>/<sub>16</sub> in.)  
Edition: 367  
Printer: David Strang (1887–1967)  
Inscribed lower left: *CSE 1924*  
Impressions: AIC, MMA, NPL, NYPL  
References: Laver 221  
Notes: 1924 Presentation/Gift Print, Fifteenth Publication. Reproduction from an impression in the Newark Public Library, New Jersey.



16.

16.  
Sears Gallagher (1869–1955)  
HEAVY SURF AT MONHEGAN, 1925  
Drypoint  
Plate: 14.6 x 22.2 cm. (5¾ x 8¾ in.)  
Edition: 375  
Printer: Henry I. Jenkins (Unknown)  
Impressions: NPL, NYPL  
Notes: 1925 Presentation/Gift Print, Sixteenth Publication. Reproduction from an impression in the Newark Public Library, New Jersey.

17.  
Louis Conrad Rosenberg (1890–1983)  
RUE DE CHARTRES, ST. MALO, 1926  
Etching  
Plate: 20 x 13.7 cm. (7⅞ x 5⅝ in.)  
Edition: 350  
Printer: Charles Welch (Unknown)  
Inscribed lower right: *L.C.R. MCMXXVI*  
Impressions: AIC, CW, LACMA, NPL, NYPL  
References: Rosenberg 37  
Notes: 1926 Presentation/Gift Print, Seventeenth Publication. Reproduction from an impression in the Newark Public Library, New Jersey.



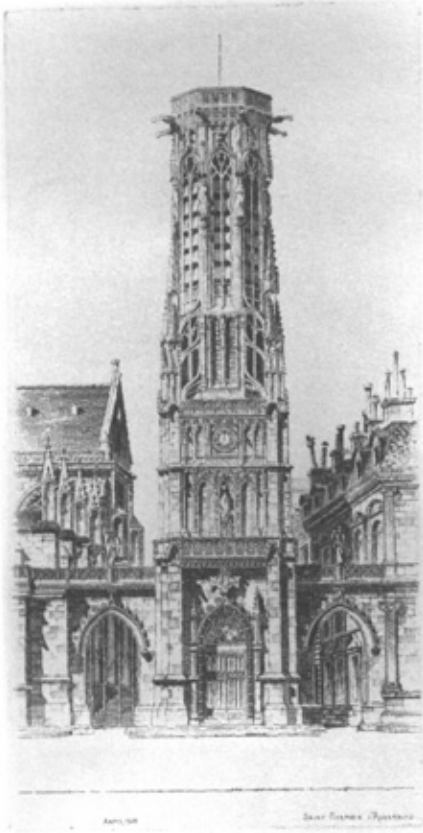
17.



18.

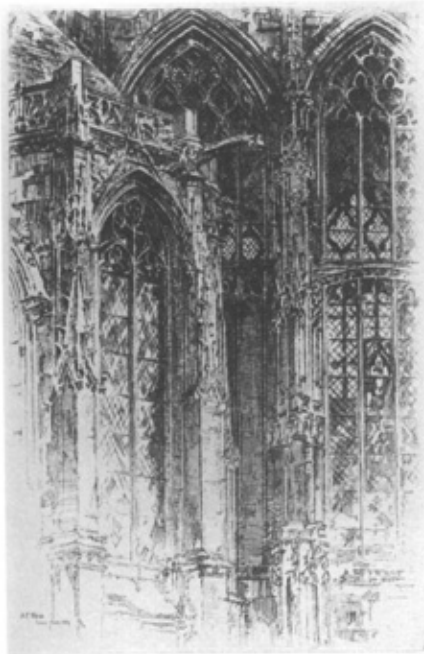
18.  
Otto J. Schneider (1875–1946)  
ST. GAUDENS' LINCOLN, 1927  
Etching  
Plate: 29.2 x 15.9 cm. (11½ x 6¼ in.)  
Edition: 350  
Printer: Henry I. Jenkins (Unknown)  
Impressions: AIC, CRMA, CW, LACMA, NPL, NYPL  
Notes: 1927 Presentation/Gift Print, Eighteenth Publication. Reproduction from an impression in the Cedar Rapids Museum of Art, Iowa.

19.  
John Taylor Arms (1887–1953)  
SAINT GERMAIN L'AUXERROIS, PARIS, 1928  
Etching  
Plate: 25.1 x 12.7 cm. (9⅞ x 5 in.)  
Edition: 362  
Printer: Frederick T. Reynolds (1882–1969)  
Inscribed lower left: *Arms 1928*; lower right: *Saint Germain L'Auxerrois*  
Impressions: AIC, BPL, LACMA, LC, MMA, NPL, NYPL  
References: Fletcher 215  
Notes: No. 24 French Church Series, 1928 Presentation/Gift Print, Nineteenth Publication. Reproduction from an impression in the Newark Public Library, New Jersey.



20.  
Alonzo C. Webb (1888–1975)  
GOTHIC LACE, 1929  
Etching  
Plate: 24.8 x 15.9 cm. (9¾ x 6¼ in.)  
Edition: 350  
Printer: Alonzo C. Webb  
Inscribed lower left: *A. C. Webb Paris Sept 1929*  
Impressions: AIC, CW, NPL, NYPL  
Notes: 1929 Presentation/Gift Print, Twentieth Publication. Reproduction from an impression in the Newark Public Library, New Jersey.

21.  
Geoffrey Heath Wedgwood (1900–1977)  
PINCIAN GARDENS, ROME, 1930  
Etching with engraving  
Plate: 24.4 x 21 cm. (9⅝ x 8¼ in.)  
Edition: 350  
Printer: David Strang (1887–1967)  
Impressions: AIC, MMA, NPL, NYPL  
Note: 1930 Presentation/Gift Print, Twenty-first Publication. Reproduction from an impression in the Newark Public Library, New Jersey.



19.

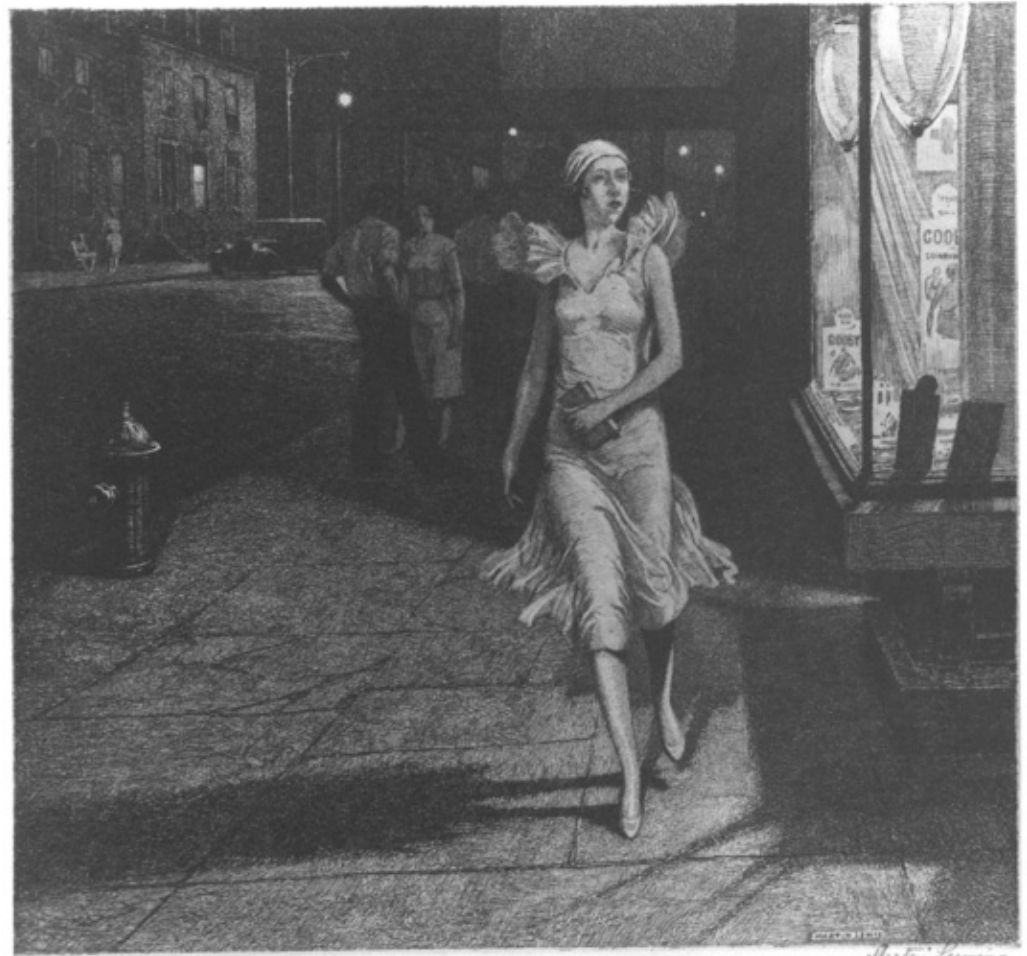
20.



21.



22.



23.



22.

Kerr Eby (1889–1946)

DIGGING FOR CLAMS, 1931

Etching

Plate: 21 x 32.1 cm. (8¼ x 12⅝ in.)

Edition: 350

Printer: Charles S. White (1877–1955)

Impressions: AIC, CW, LACMA, MMA, NPL, NYPL

Notes: 1931 Presentation/Gift Print, Twenty-second Publication. Reproduction from an impression in the Newark Public Library, New Jersey.

23.

Martin Lewis (1883–1962)

NIGHT IN NEW YORK, 1926

Etching

Plate: 21.3 x 22.2 cm. (8⅜ x 8¾ in.)

Edition: 350

Printer: Charles S. White (1877–1955)

Inscribed lower right: *Martin Lewis*

Impressions: CW, IMA, LACMA, MMA, NMAA, NPL, NYPL

References: McCarron 42

Notes: 1932 Presentation/Gift Print, Twenty-third Publication. Reproduction from an impression in the Newark Public Library, New Jersey.

24.

Gerald K. Geerlings (b. 1897)

ELECTRICAL BUILDING AT NIGHT, 1933

Etching

Plate: 30.2 x 22.5 cm. (11⅞ x 8⅞ in.)

Edition: 100.

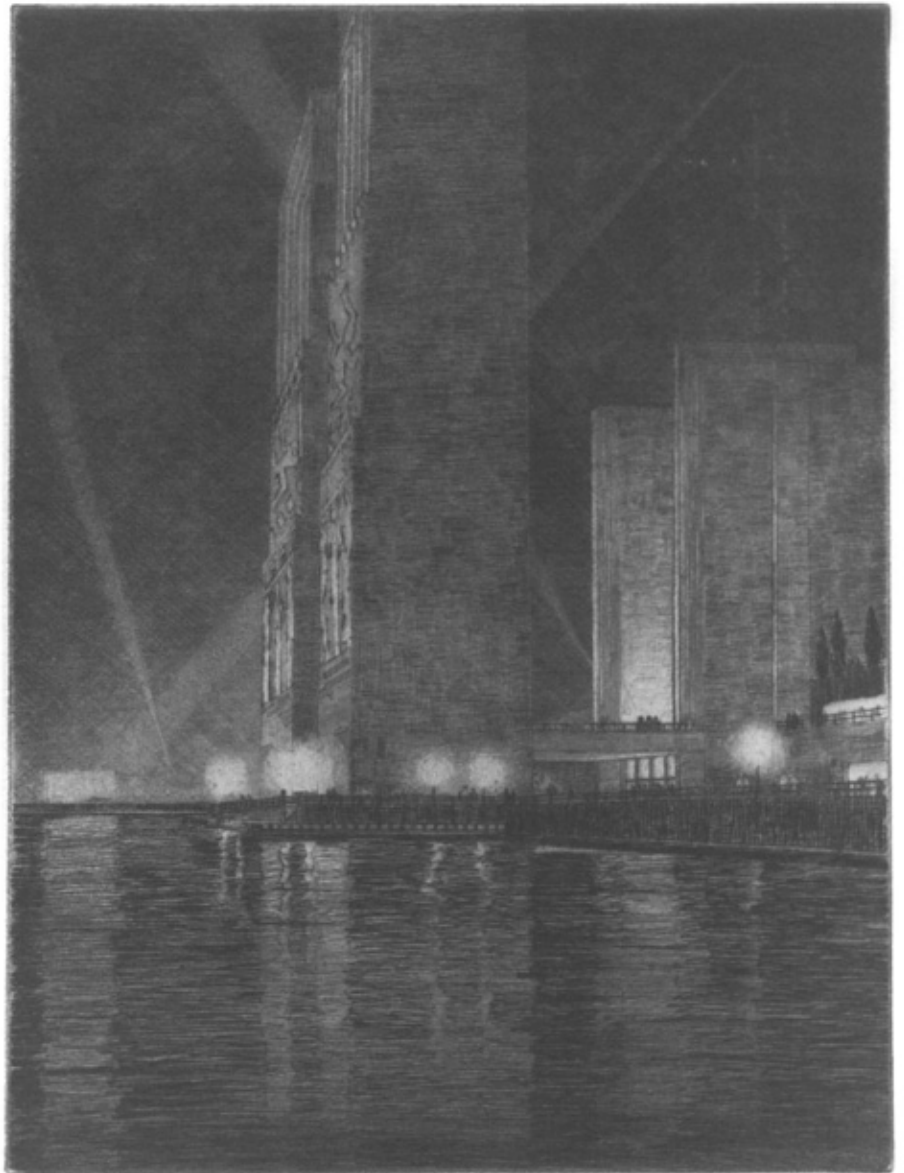
Printer: Gerald K. Geerlings, Bertha E. Jaques (1863–1941), Frank A. Nankivell (1869–1959)

Inscribed lower right: *Chicago Fair 1933*

Impressions: AIC, LACMA, MMA, NMAA, NPL, NYPL

References: Czestochowski 31

Notes: 1933 Presentation/Gift Print, Twenty-fourth Publication. Reproduction from an impression in the Newark Public Library, New Jersey.



24.

25.

Gustaf O. Dalstrom (1893–Unknown)

AN ABANDONED FARM, 1934

Etching

Plate: 19.7 x 23.5 cm. (7¾ x 9¼ in.)

Edition: 325.

Printer: Morris Henry Hobbs (1892–1967)

Impressions: AIC, NMAA, NPL, NYPL

Notes: 1934 Presentation/Gift Print, Twenty-fifth Publication. Reproduction from an impression in the Newark Public Library, New Jersey.



25.



26.

26.  
 Ralph Fletcher Seymour (1876–1966)  
 A PARIS WINE SHOP, 1935  
 Etching  
 Plate: 25.4 x 19.7 cm. (10 x 7¾ in.)  
 Edition: 325.  
 Printer: Morris Henry Hobbs (1892–1967)  
 Impressions: AIC, BM, CRMA, CW, LACMA,  
 NMAA, NPL, NYPL  
 Notes: 1935 Presentation/Gift Print, Twenty-  
 sixth Publication. Reproduction from an im-  
 pression in the Newark Public Library, New  
 Jersey.



27.

27.  
 Gordon Grant (1875–1962)  
 BANKS FISHERMAN, 1936  
 Soft ground etching and aquatint  
 Plate: 19.5 x 24.4 cm. (7<sup>11</sup>/<sub>16</sub> x 9<sup>5</sup>/<sub>8</sub> in.)  
 Edition: 325.  
 Printer: Frank A. Nankivell (1869–1959)  
 Impressions: AIC, BM, CW, LACMA, NPL,  
 NYPL  
 Notes: 1936 Presentation/Gift Print, Twenty-  
 seventh Publication. Reproduction from an  
 impression in the Newark Public Library,  
 New Jersey.



28.



29.

28.  
Mildred Bryant Brooks (b. 1901)  
COMPANIONS, 1937  
Etching  
Plate: 22.9 x 22.9 cm. (9 x 9 cm.)  
Edition: 325.  
Printer: James Swann (1905–1985)  
Impressions: CH, CW, LACMA, NPL, NYPL  
Notes: 1937 Presentation/Gift Print, Twenty-eighth Publication. Reproduction from an impression in the Newark Public Library, New Jersey.



30.

29.  
Cyrus LeRoy Baldrige (1889–1934)  
PAGAN PRINCESS, NIGERIA, 1938  
Drypoint  
Plate: 27.6 x 21.3 cm. (10<sup>7</sup>/<sub>8</sub> x 8<sup>3</sup>/<sub>8</sub> in.)  
Edition: 325.  
Printer: Charles S. White (1877–1955)  
Impressions: BM, CH, CW, LACMA, NPL, NYPL  
Notes: 1938 Presentation/Gift Print, Twenty-ninth Publication. Reproduction from an impression in the Newark Public Library, New Jersey.

30.  
Bertha E. Jaques (1863–1941)  
JIMSON WEED, 1939  
Drypoint  
Plate: 29.8 x 20 cm. (11<sup>3</sup>/<sub>4</sub> x 7<sup>7</sup>/<sub>8</sub> in.)  
Edition: 325.  
Printer: James Swann (1905–1985)  
Impressions: AIC, CRMA, CW, LACMA, NPL, NYPL  
Notes: 1939 Presentation/Gift Print, Thirtieth Publication. Reproduction from an impression in the Newark Public Library, New Jersey.



*Night in Chicago -*

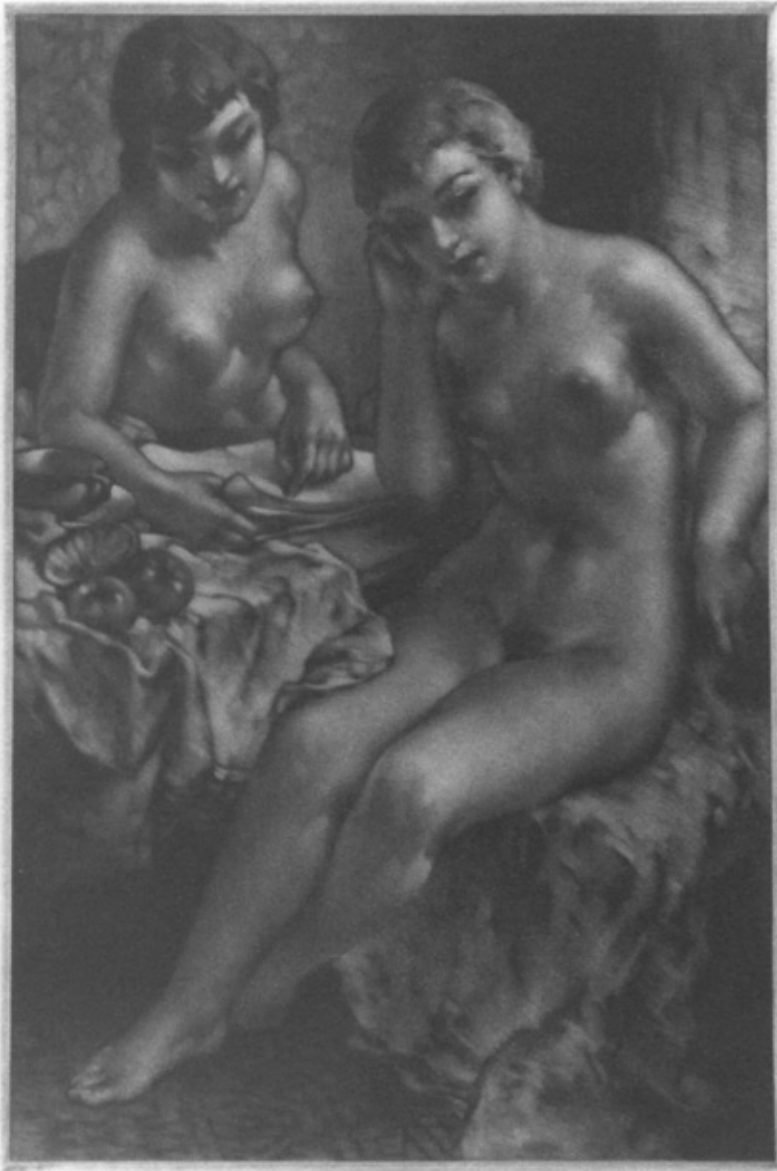
*James Swann*

31.

31.  
James Swann (1905–1985)  
NIGHT IN CHICAGO, 1940  
Drypoint  
Plate: 17.7 x 27.6 cm. (6<sup>15</sup>/<sub>16</sub> x 10<sup>3</sup>/<sub>4</sub> in.)  
Edition: 325.  
Printer: James Swann (1905–1985)  
Impressions: AIC, CH, CRMA, CW,  
LACMA, NPL, NYPL  
References: Czestochowski 105  
Notes: 1940 Presentation/Gift Print, Thirty-  
first Publication. Reproduction from an im-  
pression in the Cedar Rapids Museum of  
Art, Iowa.

32.  
Alessandro Mastro-Valerio (1889–1953)  
MORNING PAPER, 1941  
Mezzotint  
Plate: 22.5 x 14.9 cm. (8<sup>7</sup>/<sub>8</sub> x 5<sup>7</sup>/<sub>8</sub> in.)  
Edition: 325.  
Printer: James Swann (1905–1985)  
Impressions: CW, NPL, NYPL  
Notes: 1941 Presentation/Gift Print, Thirty-  
second Publication. Reproduction from an  
impression in the Newark Public Library,  
New Jersey.

33.  
Stanley Anderson (1884–1966)  
SHEEP SHEARING, 1941  
Engraving  
Plate: 19.1 x 17.5 cm. (7<sup>1</sup>/<sub>2</sub> x 6<sup>7</sup>/<sub>8</sub> in.)  
Edition: 350.  
Printer: Stanley Anderson  
Inscribed lower left: S.A.  
Impressions: AM, BPL, LACMA, NPL  
Reference: Anderson 171  
Notes: 1942 Presentation/Gift Print, Thirty-  
third Publication. Reproduction from an im-  
pression in the Newark Public Library, New  
Jersey.



32.



33.



34.

34.  
 Chauncey F. Ryder (1868–1949)  
 ROAD TO BRISTOL, 1943  
 Drypoint  
 Plate: 24.8 x 30.2 cm. (9 $\frac{3}{4}$  x 11 $\frac{7}{8}$  in.)  
 Edition: 325.  
 Printer: Charles S. White (1877–1955)  
 Impressions: AIC, CW, NPL  
 Notes: 1943 Presentation/Gift Print, Thirty-fourth Publication. Reproduction from an impression in the Newark Public Library, New Jersey.



35.

35.  
 Arthur W. Hall (1889–1981)  
 BIRD CREEK IN THAW, 1944  
 Etching  
 Plate: 20.3 x 32.7 cm. (8 x 12 $\frac{7}{8}$  in.)  
 Edition: 325.  
 Printer: Arthur W. Hall  
 Inscribed lower left: *Arthur W. Hall 1944:*  
*A. Hall Bird Creek*  
 Impressions: CW, NPL  
 Notes: 1944 Presentation/Gift Print, Thirty-fifth Publication. Reproduction from an impression in the Newark Public Library, New Jersey.

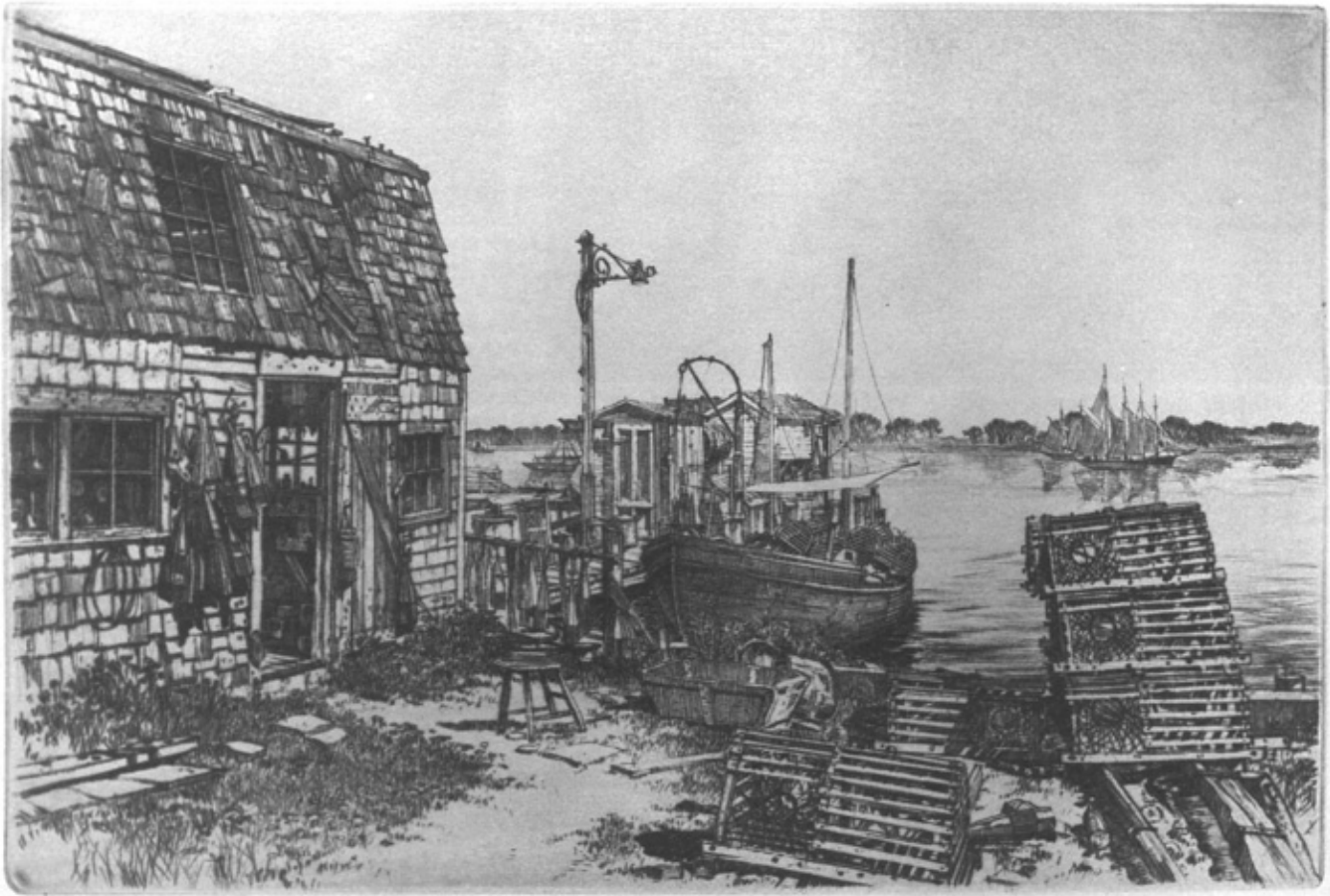




36.

R. H. Palenske (1884–1954)  
 OVER THE PASS, 1945  
 Drypoint  
 Plate: 30.5 x 25.4 cm. (12 x 10 in.)  
 Edition: 325.  
 Printer: James Swann (1905–1985)  
 Impressions: CH, CW  
 Notes: 1945 Presentation/Gift Print, Thirty-sixth Publication. Reproduction from an impression in the Cooper-Hewitt Museum, Smithsonian Institution, New York City.

37.  
 Samuel Chamberlain (1895–1975)  
 THE HARBOR SIDE, FRIENDSHIP, MAINE, 1946  
 Drypoint  
 Plate: 21.6 x 32.1 cm. (8½ x 12⅝ in.)  
 Edition: 300.  
 Printer: Charles S. White (1877–1955)  
 Impressions: BPL, CW, NPL  
 References: Chamberlain 206  
 Notes: 1946 Presentation/Gift Print, Thirty-seventh Publication. Reproduction from an impression in the Newark Public Library, New Jersey.



37.



38.

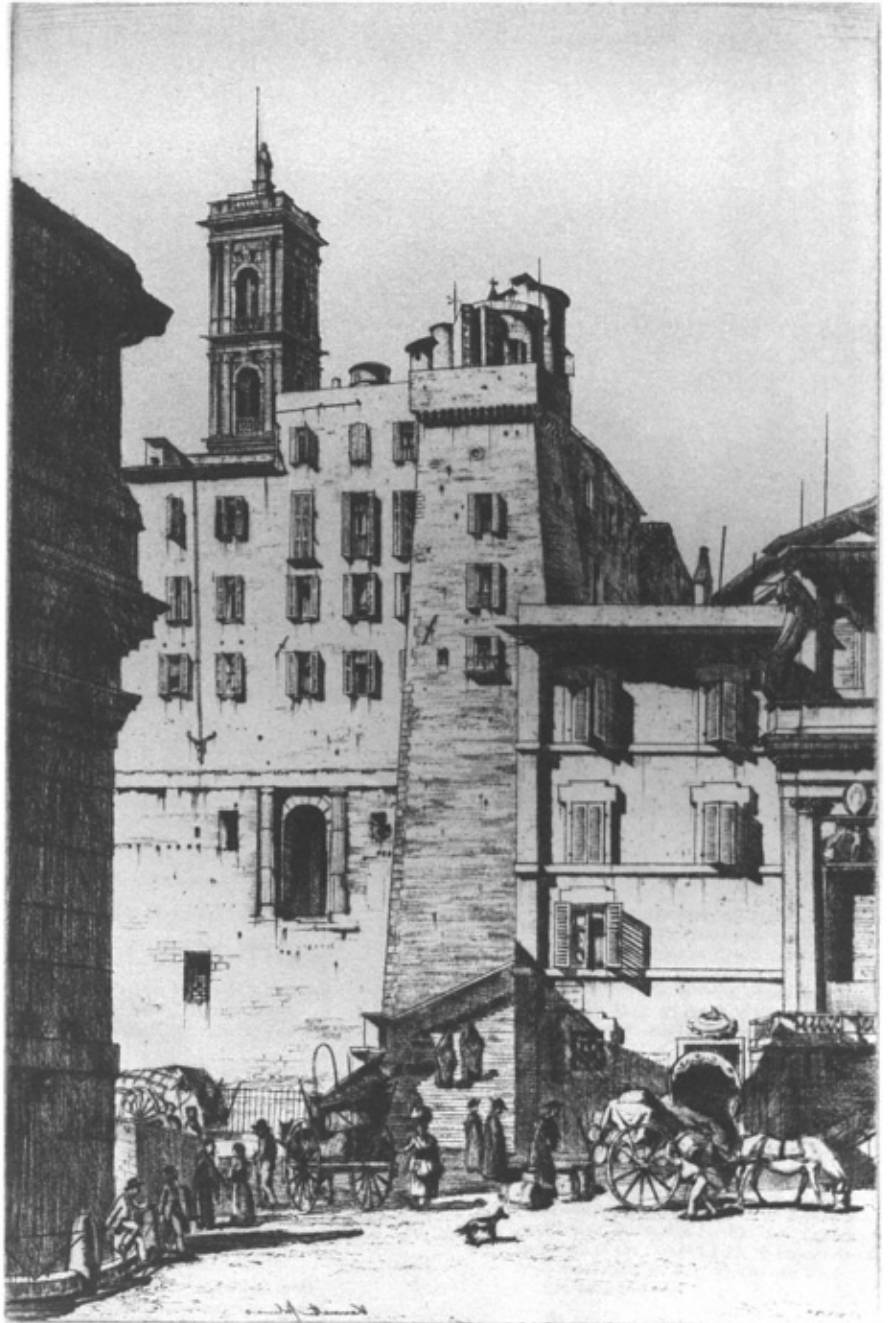


39.

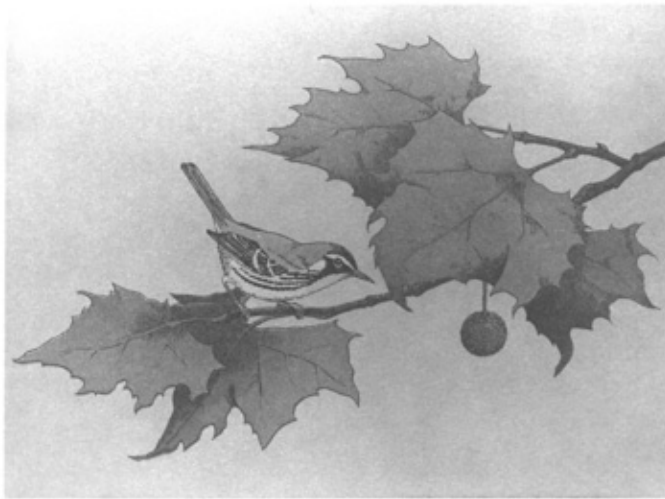
38.  
 Carl M. Schultheiss (1885–1962)  
 PASTORAL II, 1947  
 Engraving  
 Plate: 23.8 x 22.9 cm. (9 3/8 x 9 in.)  
 Edition: 200.  
 Printer: Charles S. White (1877–1955)  
 Inscribed lower right: CMS  
 Impressions: CRMA, CW, LC, NPL  
 Notes: 1947 Presentation/Gift Print, Thirty-eighth Publication. Reproduction from an impression in the Newark Public Library, New Jersey.

39.  
 Ronau William Woiceske (1887–1953)  
 WINTER INTERLUDE, 1945  
 Etching and drypoint  
 Plate: 25.1 x 32.4 cm. (9 7/8 x 12 1/4 in.)  
 Edition: 200.  
 Printer: Charles S. White (1877–1955)  
 Inscribed lower right: c  
 Impressions: CW, LC, NPL  
 Notes: 1948 Presentation/Gift Print, Thirty-ninth Publication. Reproduction from an impression in the Newark Public Library, New Jersey.

40.  
 Kenneth Holmes (1902–Unknown)  
 BEHIND THE CAPITOL, ROME, 1950  
 Etching  
 Plate: 29.2 x 19.1 cm. (11 1/2 x 7 1/2 in.)  
 Edition: 200.  
 Printer: Kenneth Holmes  
 Inscribed lower left: *Kenneth Holmes*  
 Impressions: CW, NPL  
 Notes: 1950 Presentation/Gift Print, Fortieth Publication. Reproduction from an impression in the Newark Public Library, New Jersey.



40.



43.

41.  
 Lee Sturgis (1865–1955)  
 ROCKY MOUNTAIN LAKE, 1951  
 Etching  
 Plate: 27.3 x 20.5 cm. (10<sup>3</sup>/<sub>4</sub> x 8<sup>1</sup>/<sub>16</sub> in.)  
 Edition: 200.  
 Printer: Charles S. White (1877–1955)  
 Impressions: CW, NPL  
 Notes: 1951 Presentation/Gift Print, Forty-first Publication. Reproduction from an impression in the Newark Public Library, New Jersey.

42.  
 The identification of the 1952–53 Presentation/Gift Print, Forty-second publication, is unknown. It is very possible that Lee Sturgis's ROCKY MOUNTAIN LAKE was again offered to the membership and no new publication was issued.



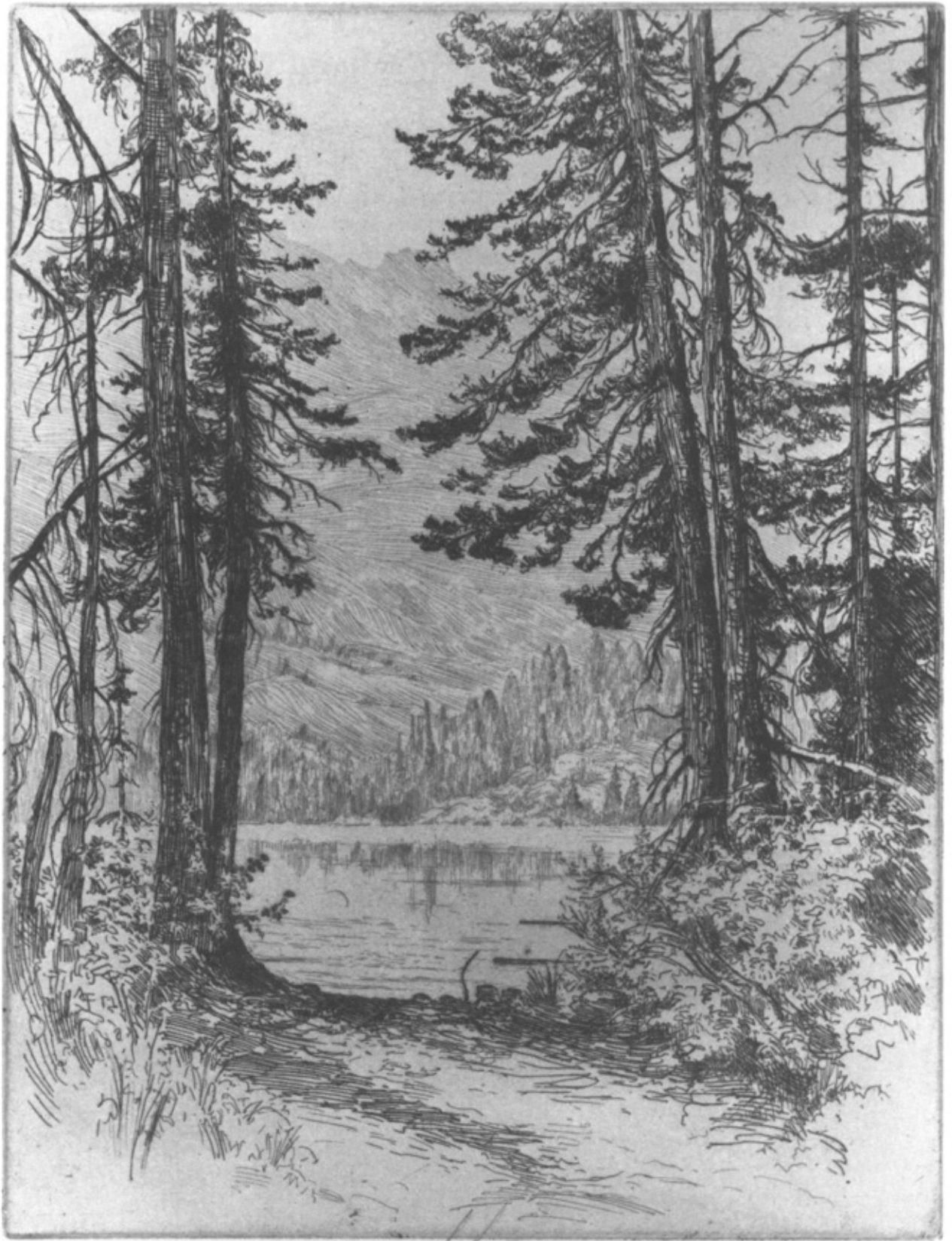
44.

43.  
 Maurice R. Bebb (b. 1891)  
 YELLOW-THROATED WARBLER, 1954  
 Color etching and aquatint  
 Plate: 16.8 x 22.5 cm. (6<sup>5</sup>/<sub>8</sub> x 8<sup>7</sup>/<sub>8</sub> in.)  
 Edition: 150.  
 Printer: M. R. Bebb  
 Impressions: LC, NPL  
 Notes: 1954 Presentation/Gift Print, Forty-third Publication. Reproduction from an impression in the Newark Public Library, New Jersey.

44.  
 F. Leslie Thompson (1889–1965)  
 ALONG THE CHENANGO RIVER, NEW YORK, 1955  
 Color etching and aquatint  
 Plate: 22.9 x 33 cm. (9 x 13 in.)  
 Edition: 150.  
 Printer: F. Leslie Thompson  
 Impressions: NPL  
 Notes: 1955 Presentation/Gift Print, Forty-fourth Publication. Reproduction from an impression in the Newark Public Library, New Jersey.

**Leon R. Pescheret**  
 (American 1892-1961)  
*Chicago Water Tower*  
 Color soft-ground etching,  
 1956  
 Edition of 150  
 Signed & titled  
 45<sup>th</sup> Presentation Print, 1956  
 12 x 9-7/8 inches





*W. H. Burgess*

# Index of Artists, Appendix A

## Chicago Society of Etchers

- Anderson, Stanley, *Sheep Shearing*, 33  
Arms, John Taylor, *Saint Germain L'Auxerrois, Paris*, 19  
Baksteen, Dirk, *Les Trois Moulins*, 12  
Baldridge, Cyrus Le Roy, *Pagan Princess, Nigeria*, 29  
Bebb, M. R., *Yellow-Throated Warbler*, 43  
Benson, Frank W., *Flying Ducks*, 10  
Brooks, Mildred Bryant, *Companions*, 28  
Chamberlain, Samuel, *The Harbor Side, Friendship, Maine*, 37  
Dalstrom, Gustaf O., *An Abandoned Farm*, 25  
Eby, Kerr, *Digging for Clams*, 22  
Gallagher, Sears, *Heavy Surf at Monhegan*, 16  
Geerlings, Gerald K., *Electrical Building at Night*, 24  
Gleeson, Charles K., *An Old Piece of Masonry: Pont Neuf, Paris*, 2  
Grant, Gordon, *Banks Fisherman*, 27  
Hall, Arthur W., *Bird Creek in Thaw*, 35  
Hardie, Martin, *Sunset at Heybridge Basin*, 15  
Heintzelman, Arthur William, *A Donkey Cart in Montmartre*, 14  
Holmes, Kenneth, *Behind the Capitol, Rome*, 40  
Hornby, Lester G., *Palais du Justice in the Rain*, 11  
Jaques, Bertha E., *Jimson Weed*, 30  
Kinney, Troy, *Dawn*, 13  
Levy, William Auerbach, *Torah — The New Talmud*, 6  
Lewis, Martin, *Night in New York*, 23  
Lewis, Arthur Allen, *The Dead Oak*, 4  
Mastro-Valerio, Alessandro, *Morning Paper*, 32  
Palenske, R. H., *Over the Pass*, 36  
Partridge, Roi, *L'Île de la Cité*, 3  
Rosenberg, Louis Conrad, *Rue de Chartres, St. Malo*, 17  
Roth, Ernest D., *Our Neighbors Yard, Cliffside, New Jersey*, 7  
Roth, Ernest D., *A Rainy Day*, 1  
Ryder, Chauncey F., *Road to Bristol*, 34  
Schneider, Otto J., *St. Gaudens' Lincoln*, 18  
Schultheiss, Carl M., *Pastoral II*, 38  
Seymour, Ralph Fletcher, *A Paris Wine Shop*, 26  
Sturgis, Lee, *Rocky Mountain Lake*, 41  
Swann, James, *Night in Chicago*, 31  
Thompson, F. Leslie, *Along the Chenango River, New York*, 44  
Vondrous, Jan C., *The Old Town Bridge Tower (Prague)*, 8  
Webb, Alonzo C., *Gothic Lace*, 20  
Wedgwood, Geoffrey Heath, *Pincian Gardens, Rome*, 21  
Winkler, John W. J., *Kong Tong & Co.*, 9  
Woiceske, Ronau William, *Winter Interlude*, 39  
Wood, Franklin T., *The Dry Brook*, 5