

CEDAR RAPIDS MUSEUM OF ART  
JAMES SWANN *In Quest of a Printmaker*  
CEDAR RAPIDS MUSEUM OF ART

# JAMES SWANN

*In Quest of a Printmaker*



WITH PRESENTATION PRINTS OF  
THE CHICAGO SOCIETY OF ETCHERS, PRAIRIE PRINT MAKERS,  
AND THE WOODCUT SOCIETY

CEDAR RAPIDS MUSEUM OF ART

Joseph S. Czestochowski

**INTERNATIONAL ARTS, Memphis, TN.**

Tel 1917 843 9696 Fax 1212 208 2490 [interarts@parkers.com](mailto:interarts@parkers.com)

APPENDIX B

# Prairie Print Makers

PRESENTATION PRINTS, 1931–1965

The Prairie Print Makers was organized in December 1930 with eleven charter members, including Lloyd C. Foltz, Arthur W. Hall, Norma Bassett Hall, C. A. Seward, Birger Sandzen, Charles M. Capps, and Leo Courtney. The activities included the organization of traveling exhibitions and the issuance of annual presentation/gift prints.

From 1931 to 1965, with the exception of 1963, the Prairie Print Makers issued presentation/gift prints to its associate members. The group's work was conducted by the secretary-treasurer, and the following individuals served in that capacity: C. A. Seward, 1931 to 1938; Leo Courtney, 1939; Charles M. Capps, 1940 to 1942; William J. Dickerson, 1943; Arthur W. Hall, 1944 to 1946; and James Swann, 1947 to 1965.

For more information see Arthur W. Hall, *The Prairie Print Makers* (Santa Fe, New Mexico: Privately printed brochure, c. 1944); Elizabeth Broun, *Kansas Printmakers* (Lawrence, Kansas: Spencer Museum of Art, University of Kansas, 1981); and Barbara Thompson O'Neill, George C. Foreman, and Howard W. Ellington, *The Prairie Print Makers* (Topeka, Kansas: Kansas Art Commission, 1981). All reproductions are from impressions in the collection of Howard W. Ellington, Wichita, Kansas.





1.



2.



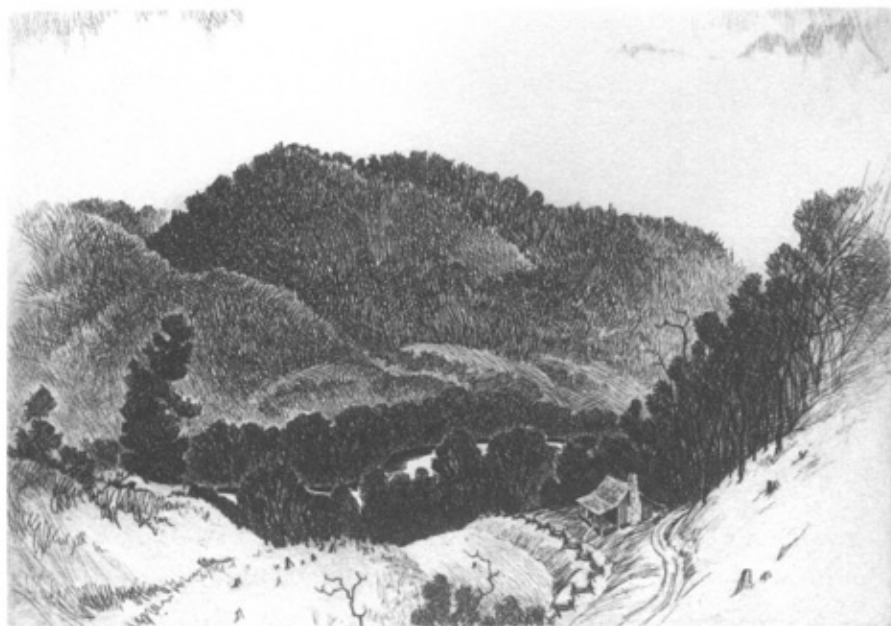
3.



4.

1.  
 Birger Sandzen (1871–1954)  
 A KANSAS CREEK, 1930  
 Lithograph  
 Image: 17.8 x 25.4 cm. (7 x 10 in.)  
 Edition: 200.  
 Printer: C.A. Seward, Great Western  
 Lithograph Company, Wichita, Kansas  
 Inscribed lower right: *Birger Sandzen*  
 Impression: LC  
 Reference: Sandzen 131  
 Notes: 1931 Presentation/Gift Print, First  
 Publication.

2.  
 Arthur W. Hall (1889–1981)  
 STONE BRIDGE IN WINTER, 1932  
 Drypoint  
 Plate: 19.1 x 22.5 cm. (7½ x 8⅞ in.)  
 Edition: 150.  
 Printer: Arthur W. Hall  
 Inscribed lower left: *Arthur W. Hall 1932*  
 Impression: LC  
 Notes: 1932 Presentation/Gift Print, Second  
 Publication.



5.

5.  
Lloyd C. Foltz (b. 1897)  
OZARK VALLEY, 1935  
Etching  
Plate: 18.3 x 25.9 cm. (7<sup>1</sup>/<sub>16</sub> x 10<sup>3</sup>/<sub>16</sub> in.)  
Edition: 200.  
Printer: Lloyd C. Foltz  
Impressions: CRMA, LC, NYPL  
Notes: 1935 Presentation/Gift Print, Fifth Publication.



6.

6.  
C. A. Seward (1884–1939)  
ADOBE VILLAGE — NEW MEXICO, 1936  
Lithograph  
Image: 22.9 x 29.8 cm. (9 x 11<sup>3</sup>/<sub>4</sub> in.)  
Edition: 200.  
Printer: C. A. Seward, Great Western Lithograph Company, Wichita, Kansas  
Inscribed lower left: C.A. Seward  
Impressions: LC, NYPL  
Notes: 1936 Presentation/Gift Print, Sixth Publication.

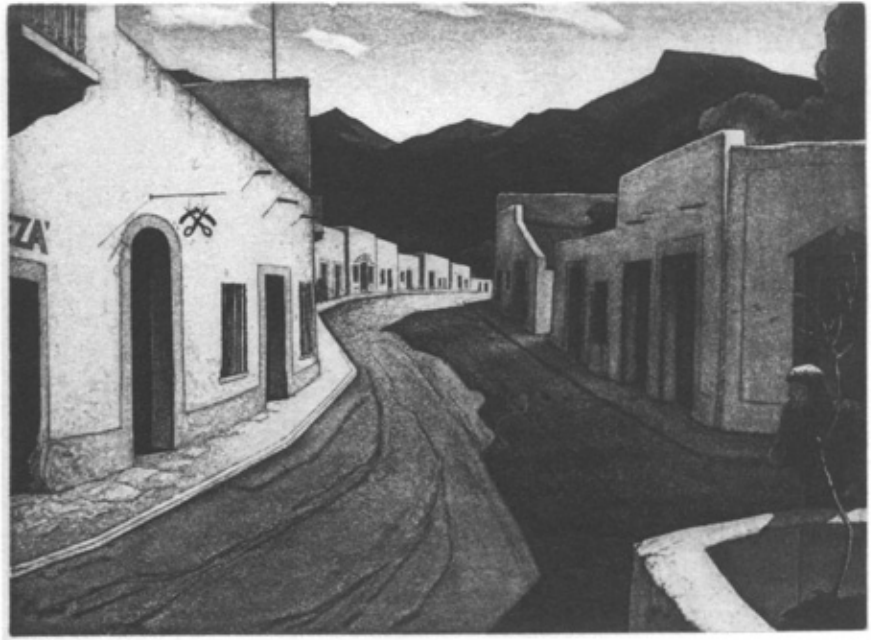
3.  
Levon West (1900–1968)  
THE PRAIRIE RIDER, 1933  
Etching  
Plate: 22.2 x 20 cm. (8<sup>3</sup>/<sub>4</sub> x 7<sup>7</sup>/<sub>8</sub> in.)  
Edition: 200.  
Printer: Ernest D. Roth (1879–1964)  
Inscribed lower left: *Levon West*  
Impressions: LC, MMA  
Notes: 1933 Presentation/Gift Print, Third Publication.

4.  
Ernest Watson (1884–1969)  
WOODBINE, 1934  
Color linoleum cut  
Image: 17.1 x 23.5 cm. (6<sup>3</sup>/<sub>4</sub> x 9<sup>1</sup>/<sub>4</sub> in.)  
Edition: 200.  
Printer: Ernest Watson  
Impression: LC  
Notes: 1934 Presentation/Gift Print, Fourth Publication.

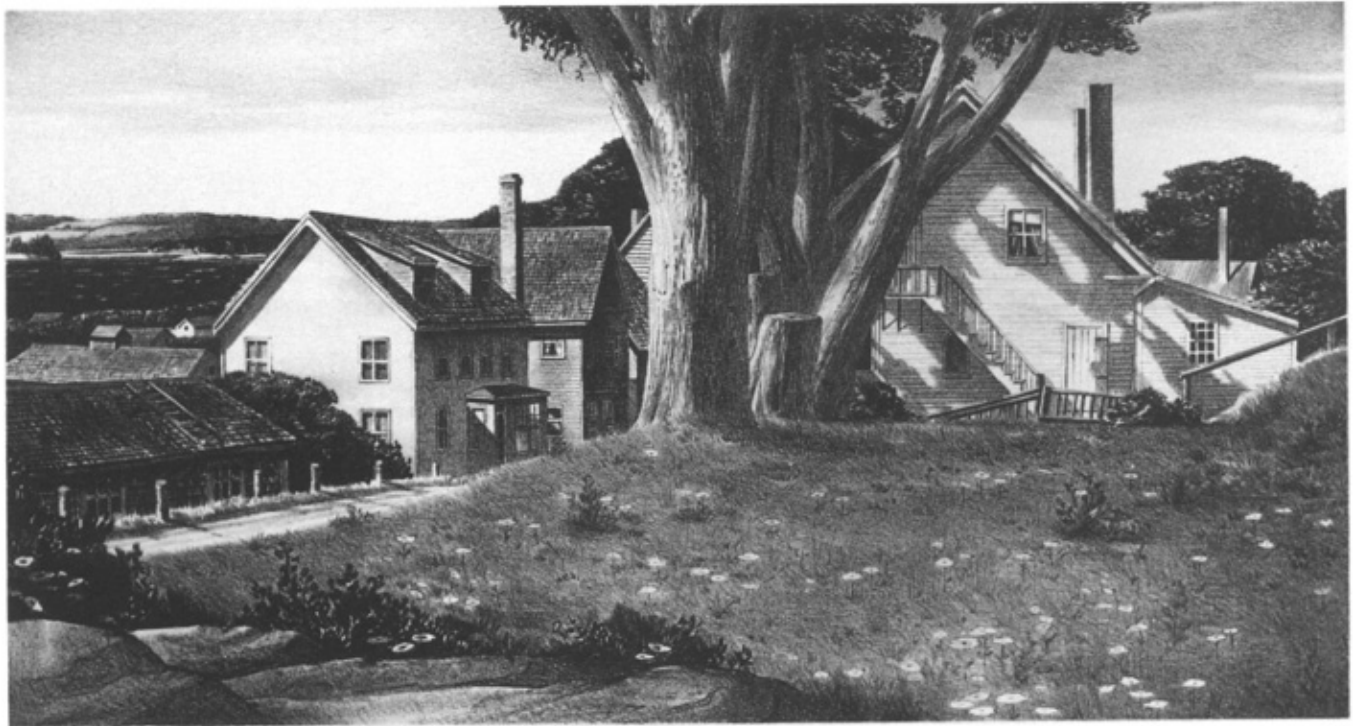
7.  
William Auerbach Levy (1889–1964)  
JOB, 1937  
Etching  
Plate: 25.1 x 20 cm. (9<sup>7</sup>/<sub>8</sub> x 7<sup>7</sup>/<sub>8</sub> in.)  
Edition: 200.  
Printer: Ernest D. Roth (1879–1964)  
Inscribed lower left: *WAL*  
Impressions: CRMA, LC, NYPL  
Notes: 1937 Presentation/Gift Print, Seventh Publication.



9.



8.



10.

8.  
Charles M. Capps (1898–1981)  
MEXICAN BARBER SHOP, 1938  
Aquatint  
Plate: 21.6 x 28.9 cm. (8½ x 11⅜ in.)  
Edition: 200.  
Printer: Charles M. Capps  
Inscribed lower left: *Capps*  
Impressions: LC, NYPL  
Notes: 1938 Presentation/Gift Print, Eighth  
Publication.

9.  
Alfred H. Hutty (1877–1954)  
LOBLOLLY PINES, 1939  
Drypoint  
Plate: 16.8 x 21.3 cm. (6⅝ x 8⅜ in.)  
Edition: 200.  
Printer: Alfred H. Hutty  
Impressions: LC, NYPL  
Notes: 1939 Presentation/Gift Print, Ninth  
Publication.

10.  
Stow Wengenroth (1906–1978)  
NEW ENGLAND VILLAGE, CASTINE, MAINE,  
1940  
Lithograph  
Image: 18.7 x 34.9 cm. (7⅝ x 13¾ in.)  
Edition: 214.  
Printer: George C. Miller (1894–1966)  
Impressions: BPL, LC, NYPL  
References: Stuckey 103  
Notes: 1940 Presentation/Gift Print, Tenth  
Publication.





11.

11.  
Doel Reed (1884–1985)  
SPRING, 1941  
Etching and aquatint  
Plate: 25.4 x 35.6 cm. (10 x 14 in.)  
Edition: 200.  
Printer: Doel Reed  
Impressions: LC, NMAA, NYPL  
Notes: 1941 Presentation/Gift Print, Eleventh  
Publication.



12.

12.  
William J. Dickerson (1904–1972)  
CHURCH AT CANYONCITO, 1942  
Lithograph  
Image: 22.5 x 30.5 cm. (8<sup>7</sup>/<sub>8</sub> x 12 in.)  
Edition: 200.  
Printer: George C. Miller (1894–1966)  
Impressions: LC, NYPL  
Notes: 1942 Presentation/Gift Print, Twelfth  
Publication.



13.

13.  
 Norma Bassett Hall (1890–1957)  
 LA GAUDE—FRANCE, 1943  
 Color blockprint  
 Image: 17.8 x 24.1 cm. (7 x 9½ in.)  
 Edition: 200.  
 Printer: Norma Bassett Hall  
 Impression: NYPL  
 Notes: 1943 Presentation/Gift Print,  
 Thirteenth Publication.

14.  
 Cyrus Le Roy Baldridge (1899–1977)  
 SOO CHOW CANAL, 1944  
 Drypoint  
 Plate: 30.5 x 22.2 cm. (12 x 8¾ in.)  
 Edition: 200.  
 Printer: Ernest D. Roth (1879–1964)  
 Impressions: LC, NYPL  
 Notes: 1944 Presentation/Gift Print,  
 Fourteenth Publication.

15.  
 Gene Kloss (b. 1903)  
 SOUTHWESTERN SUMMER, 1945  
 Etching and drypoint  
 Plate: 21.6 x 27.9 cm. (8½ x 11 in.)  
 Edition: 125.  
 Printer: Gene Kloss  
 Impressions: LC, NYPL  
 References: Kloss 399  
 Notes: 1945 Presentation/Gift Print,  
 Fifteenth Publication.

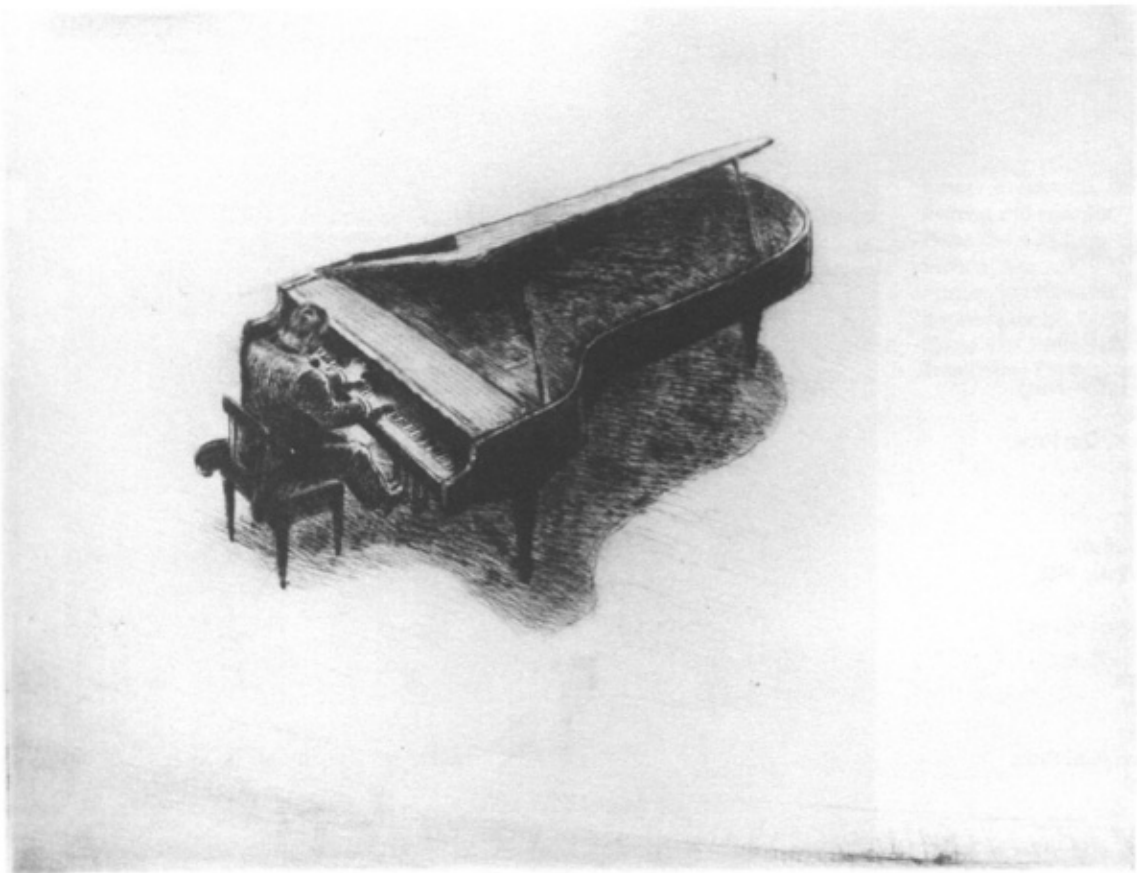


14.

16.  
 Grant T. Reynard (1887–1968)  
 THE PIANIST, 1946  
 Etching  
 Plate: 22.2 x 27.3 cm. (8¾ x 10¾ in.)  
 Edition: 200.  
 Printer: Ernest D. Roth (1879–1964)  
 Impressions: CRMA, NYPL  
 Notes: 1946 Presentation/Gift Print,  
 Sixteenth Publication.



15.



16.





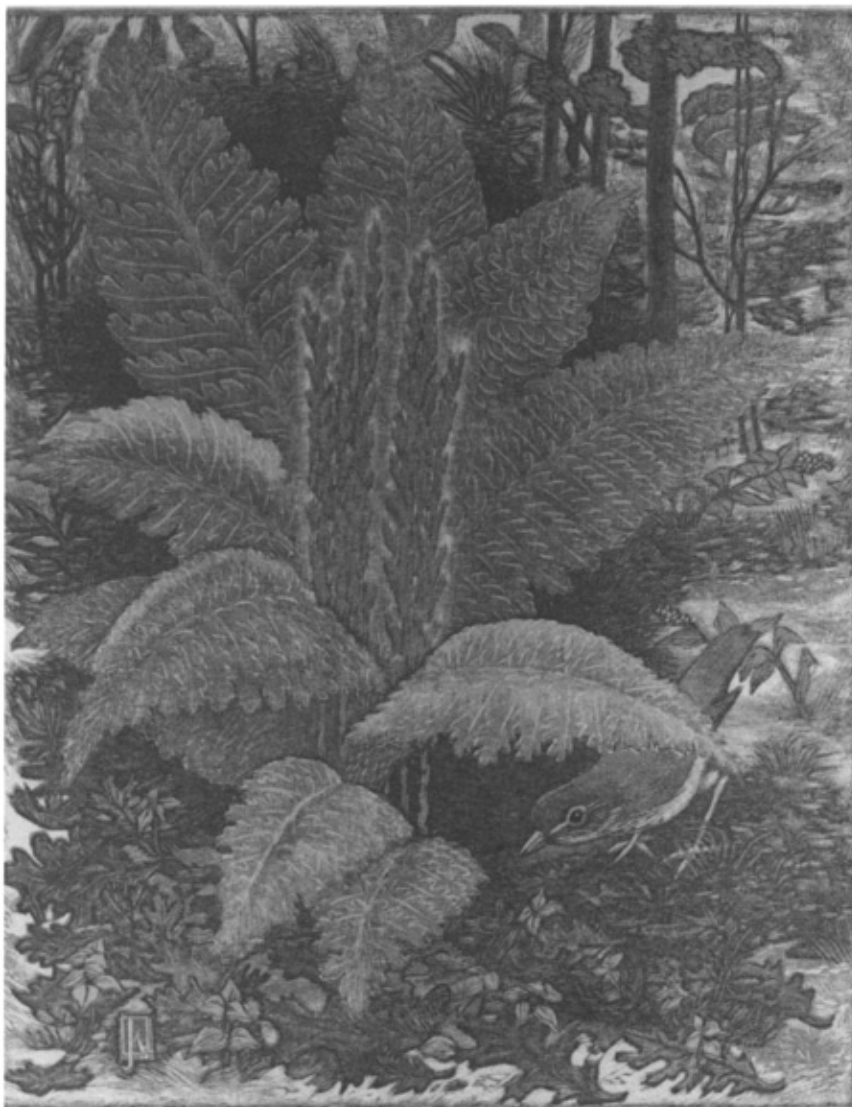
17.

17.  
Gordon H. Grant (1875–1962)  
HEAVE AND HAUL, 1947  
Etching  
Plate: 20.3 x 25.4 cm. (8 x 10 in.)  
Edition: 200.  
Printer: Ernest D. Roth (1879–1964)  
Impressions: LC, NYPL  
Notes: 1947 Presentation/Gift Print,  
Seventeenth Publication.

18.  
James D. Havens (1900–1960)  
CINNAMON FERN AND VEERY, 1948  
Color woodblock  
Plate: 21.6 x 16.5 cm. (8½ x 6½ in.)  
Edition: 200.  
Printer: James D. Havens  
Inscribed lower left: J. H.  
Impressions: LC, NYPL  
Notes: 1948 Presentation/Gift Print,  
Eighteenth Publication.



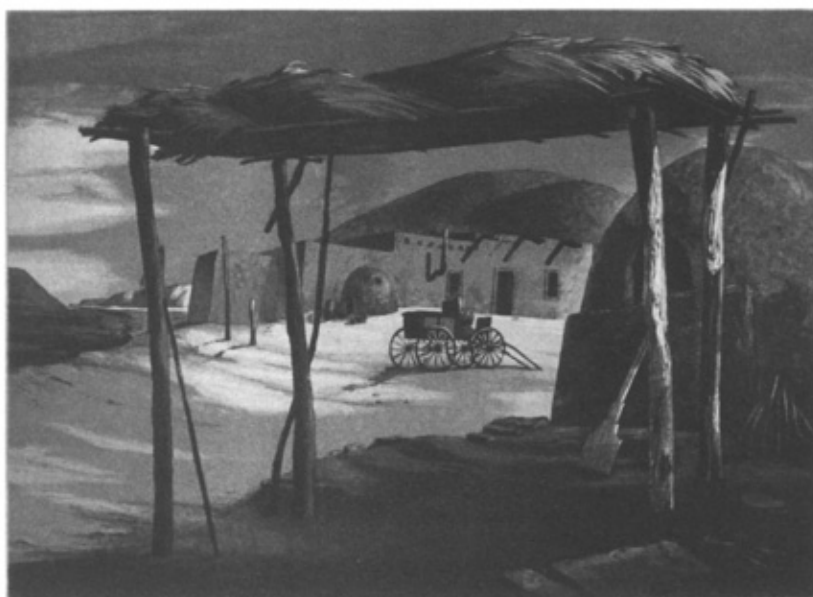
19.



19.  
Leslie Cope (b. 1913)  
GOING HOME, 1949  
Drypoint  
Plate: 20.3 x 25.1 cm. (8 x 9<sup>7</sup>/<sub>8</sub> in.)  
Edition: 200.  
Printer: Leslie Cope  
Impressions: LC, NYPL  
Notes: 1949 Presentation/Gift Print,  
Nineteenth Publication.

20.  
Elizabeth Saltonstall (b. 1900)  
GLOXINIAS, 1950  
Lithograph  
Image: 25.1 x 28.6 cm. (9<sup>7</sup>/<sub>8</sub> x 11<sup>1</sup>/<sub>4</sub> in.)  
Edition: 200.  
Printer: George C. Miller (1894–1966)  
Impressions: CRMA, LC, NYPL  
Notes: 1950 Presentation/Gift Print,  
Twentieth Publication.

21.  
Ted Hawkins (1911–1969)  
SLEEPY AFTERNOON, 1951  
Etching and aquatint  
Plate: 25.4 x 34.3 cm. (10 x 13<sup>1</sup>/<sub>2</sub> in.)  
Edition: 200.  
Printer: Ted Hawkins  
Impressions: LC, NYPL  
Notes: 1951 Presentation/Gift Print,  
Twenty-first Publication.



21.



22.

Clare Leighton (b. 1901)  
 CORN PULLING, 1952  
 Wood engraving  
 Image: 16.8 x 14 cm. (6<sup>5</sup>/<sub>8</sub> x 5<sup>1</sup>/<sub>2</sub> in.)  
 Edition: 100.  
 Printer: James D. Havens (1900–1960)  
 Impressions: CW, GM, LC, NYPL  
 Reference: Leighton 641  
 Notes: 1952 Presentation/Gift Print,  
 Twenty-second Publication.

23.  
 James Swann (1905–1985)  
 WILLOW, 1953  
 Drypoint  
 Plate: 27.5 x 21.2 cm. (10<sup>7</sup>/<sub>16</sub> x 8<sup>3</sup>/<sub>8</sub> in.)  
 Edition: 200.  
 Printer: James Swann  
 Impressions: CRMA, LC, NYPL  
 References: Czestochowski 211  
 Notes: 1953 Presentation/Gift Print,  
 Twenty-third Publication.



23.



24.



26.



25.

24.  
 Agnes Tait (1894–1981)  
 OLD FRIENDS, 1954  
 Lithograph  
 Image: 26.7 x 21.6 cm. (10½ x 8½ in.)  
 Edition: 200.  
 Printer: Lynton Kistler (b. 1897)  
 Impressions: CRMA, LC, NYPL  
 Notes: 1954 Presentation/Gift Print,  
 Twenty-fourth Publication.

25.  
 Luigi Lucioni (1900–1988)  
 THEMES IN WHITE, 1954  
 Alternate title: WHITE MOTIF  
 Etching  
 Plate: 21.9 x 28.9 cm. (8⅞ x 11⅞ in.)  
 Edition: 100.  
 Printer: James Swann (1905–1985)  
 Inscribed lower left: *L. Lucioni*  
 Impressions: LC, NYPL  
 References: Embury 125  
 Notes: 1955 Presentation/Gift Print,  
 Twenty-fifth Publication.

26.  
 Margaret Ann Gaug (b. 1909)  
 BALLERINA, 1956  
 Etching and aquatint  
 Plate: 25.4 x 20.3 cm. (10 x 8 in.)  
 Edition: 200.  
 Printer: James Swann (1905–1985)  
 Impressions: CRMA, LC  
 Notes: 1956 Presentation/Gift Print,  
 Twenty-sixth Publication.

27.  
 Stow Wengenroth (1906–1978)  
 THE FAR SHORE, OGUNQUIT, MAINE, 1957  
 Lithograph  
 Image: 20.3 x 34.1 cm. (8 x 13⅞ in.)  
 Edition: 200.  
 Printer: George C. Miller (1894–1966)  
 Impression: BPL  
 References: Stuckey 238  
 Notes: 1957 Presentation/Gift Print,  
 Twenty-seventh Publication.

28.  
 Walter J. Phillips (1884–1963)  
 WATERFALL, LAKE OF THE WOODS, 1934  
 Alternate title: Rushing Water  
 Wood engraving  
 Image: 11.1 x 19.1 cm. (4⅜ x 7½ in.)  
 Edition: 200.  
 Printer: Unknown  
 Impressions: CRMA, LC  
 References: Boulet MBL 205  
 Notes: 1958 Presentation/Gift Print,  
 Twenty-eighth Publication.



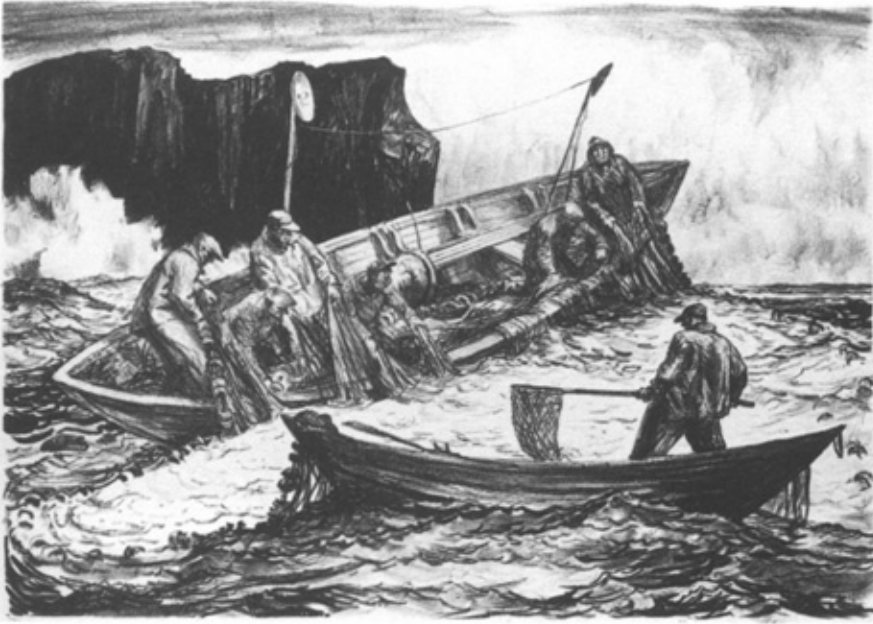


27.



28.





29.



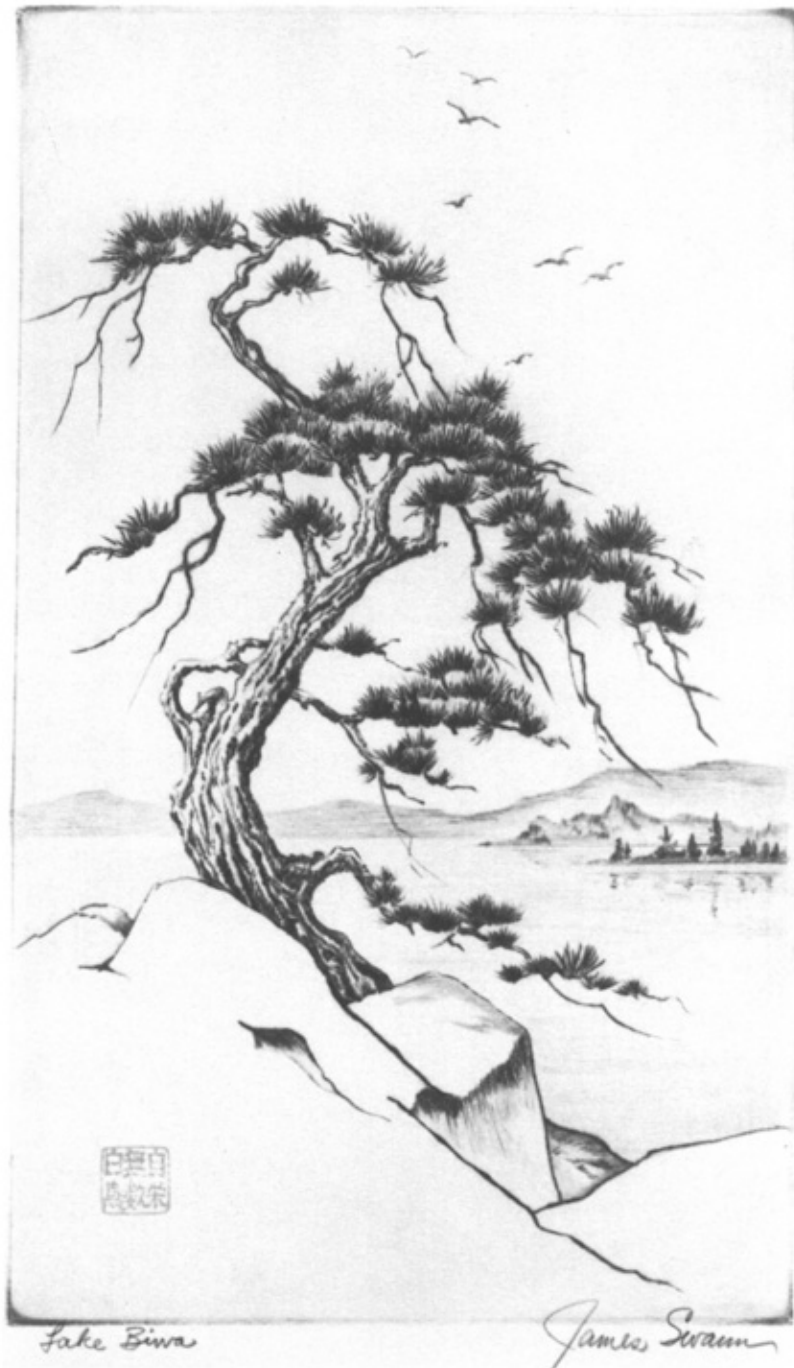
30.



*Julius Sargent*

*Los Angeles*

31.  
133



33.

29.  
Robert von Neumann (1888–1976)  
FISHING OFF THE MAINE COAST, 1959  
Lithograph  
Image: 26.7 x 37.5 cm. (10½ x 14¾ in.)  
Edition: 200.  
Printer: George C. Miller (1894–1966)  
Impression: CRMA  
Notes: 1959 Presentation/Gift Print,  
Twenty-ninth Publication.

30.  
Maurice R. Bebb (b. 1891)  
WHITE BREASTED NUTHATCH, 1960  
Color etching  
Plate: 23.5 x 18.4 cm. (9¼ x 7¼ in.)  
Edition: 200.  
Printer: Maurice R. Bebb  
Impression: LC  
Notes: 1960 Presentation/Gift Print,  
Thirtieth Publication.

31.  
Leo Meissner (1895–1977)  
TIDAL SURGE, 1961  
Wood engraving  
Image: 21.6 x 27.6 cm. (8½ x 10¾ in.)  
Edition: 200.  
Printer: Leo Meissner  
Impressions: CRMA, LC  
Notes: 1961 Presentation/Gift Print,  
Thirty-first Publication.



32.



34.

32.  
Lloyd C. Foltz (b. 1897)  
GHOST TOWN, 1962  
Lithograph  
Image: 17.8 x 31.8 cm. (7 x 12½ in.)  
Edition: 200.  
Printer: Lloyd C. Foltz  
Impressions: CRMA, LC  
Note: 1962 Presentation/Gift Print,  
Thirty-second Publication. No gift print was  
commissioned in 1963. Members were invited  
to select a print from remaining impressions  
of previous gift prints.

33.  
James Swann (1905–1985)  
LAKE BIWA, 1964  
Drypoint  
Plate: 27.6 x 16.5 cm. (10⅞ x 6½ in.)  
Edition: 130.  
Printer: James Swann  
Impression: CRMA  
References: Czestochowski 255  
Notes: 1964 Presentation/Gift Print,  
Thirty-third Publication.

34.  
Charles M. Capps (1898–1981)  
IDYL OF NEW MEXICO, 1965  
Etching and aquatint  
Plate: 17.8 x 31.1 cm. (7 x 12¼ in.)  
Edition: 130.  
Printer: Charles M. Capps  
Notes: 1965 Presentation/Gift Print,  
Thirty-fourth Publication.

## *Index of Artists, Appendix B Prairie Print Makers*

- Baldrige, Cyrus LeRoy, *Soo Chow Canal*, 14  
Bebb, Maurice R., *White Breasted Nuthatch*, 30  
Capps, Charles M., *Idyl of New Mexico*, 34  
Capps, Charles M., *Mexican Barber Shop*, 8  
Cope, Leslie, *Going Home*, 19  
Dickerson, William J., *Church at Canyoncito*, 12  
Foltz, Lloyd C., *Ozark Valley*, 5  
Foltz, Lloyd C., *Ghost Town*, 32  
Gaug, Margaret Ann, *Ballerina*, 26  
Grant, Gordon H., *Heave and Haul*, 17  
Hall, Norma Bassett, *La Gaude – France*, 13  
Hall, Arthur W., *Stone Bridge in Winter*, 2  
Havens, James D., *Cinnamon Fern and Veery*, 18  
Hawkins, Ted, *Sleepy Afternoon*, 21  
Hutty, Alfred H., *Loblolly Pines*, 9  
Kloss, Gene, *Southwestern Summer*, 15  
Leighton, Clare, *Corn Pulling*, 22  
Levy, William Auerbach, *Job*, 7  
Lucioni, Luigi, *Themes in White*, 25  
Meissner, Leo, *Tidal Surge*, 31  
Neumann, Robert von, *Fishing Off the Maine Coast*, 29  
Phillips, Walter J., *Waterfall, Lake of the Woods*, 28  
Reed, Doel, *Spring*, 11  
Reynard, Grant T., *The Pianist*, 16  
Saltonstall, Elizabeth, *Gloxinias*, 20  
Sandzen, Birger, *A Kansas Creek*, 1  
Seward, C. A., *Adobe Village – New Mexico*, 6  
Swann, James, *Willow*, 23  
Swann, James, *Lake Biwa*, 33  
Tait, Agnes, *Old Friends*, 24  
Watson, Ernest, *Woodbine*, 4  
Wengenroth, Stow, *The Far Shore, Ogunquit, Maine*, 27  
Wengenroth, Stow, *New England Village, Castine, Maine*, 10  
West, Levon, *The Prairie Rider*, 3